

Bull

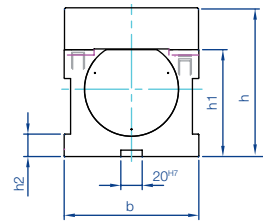
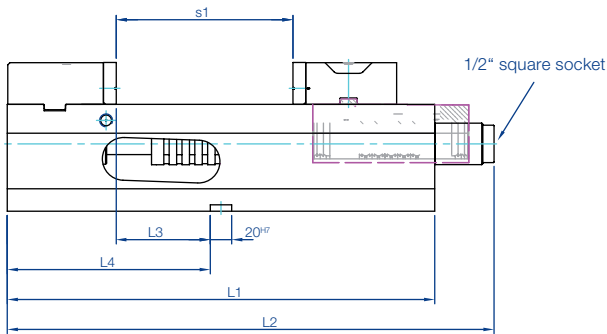
mechanical

Mechanical compact vise with draw-in system and patented clamping range adjustment.

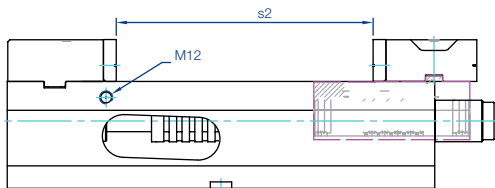
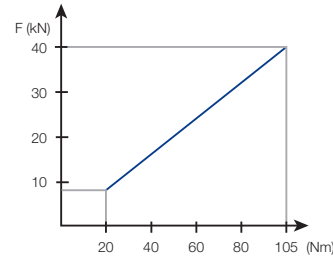
- > Mechanical clamping force build-up
- > Repeatable clamping force through torque wrench
- > Dirt resistant encapsulated spindle, no thread in the chip area
- > Patented quick adjustment of the clamping range
- > Strong body of spheroidal graphite iron GJS-600
- > Compact design, constant length for machining centres
- > Wide clamping range through the use of step jaws

Scope of delivery:

4 clamping claws



Clamping force diagram



Size b	Order no.	Jaws	max. clamping force kN	max. torque Nm	Clamping range		Weight kg
					s1	s2	
125	04.25.152.001.9	Block jaws	40	105	0-165	40-240	30
125	04.25.152.002.9	Step jaws	40	105	3-175	173-345	30

Size b	L1	L2	L3	L4	h	h1 ±0,01	h2
125	400	445	88	190	140	100	21



Step ledge quick release system

- > Step ledges are simply "clicked" in by hand, with no need for tools
- > No penetration of chips beneath the step ledge
- > Secure and stable hold, also with the use of compressed air
- > Available in a range of heights (accessories)



Quick adjustment of the clamping range

- > By rotating the spindle 180° it is possible to adjust the clamping range very quickly

With step jaws

- > Size 125 / 3-345 clamping range
- Order no. 04.25.152.002.9



Bull 5-S

mechanical

Flexible mechanical compact vise for 5-sided machining and for clamping raw parts. Flexibly adjustable to the workpiece through the use of different jaws.

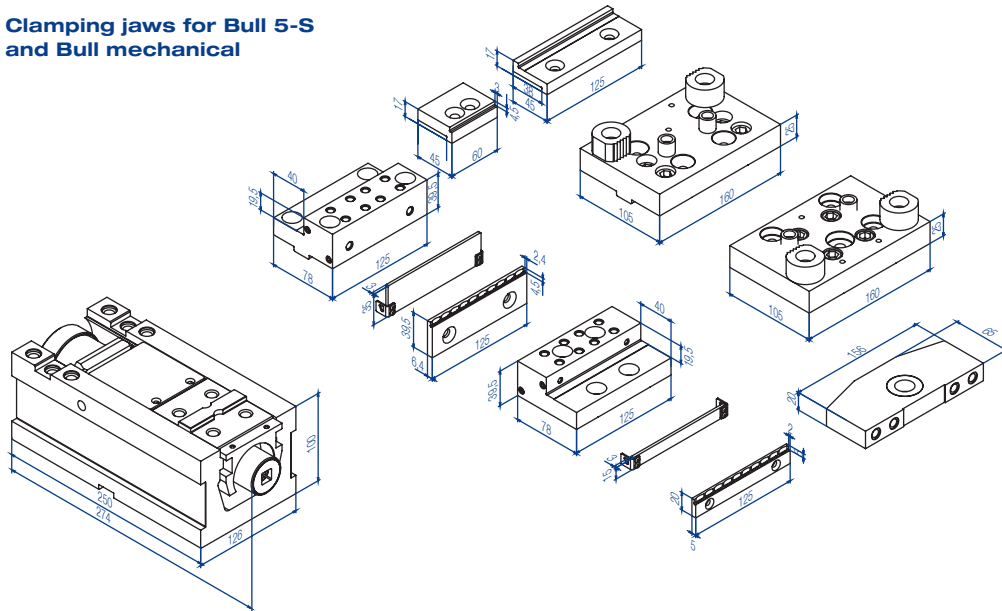
- > Compact design: Optimum accessibility for 5-sided machining
- > Mechanical clamping force build-up
- > Repeatable clamping force through torque wrench
- > Re-tightening stack of disc springs, ideal for clamping with "grip"
- > Dirt resistant covered and encapsulated spindle, no thread in the chip area
- > Patented quick adjustment of the clamping range
- > Strong body of spheroidal graphite iron GJS-600
- > Compact design, constant length for machining centres
- > Wide clamping range through the use of step jaws



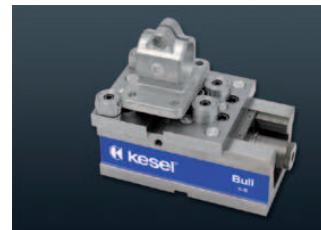
Scope of delivery:

4 clamping claws
without jaws

Clamping jaws for Bull 5-S and Bull mechanical



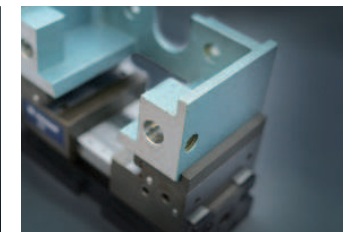
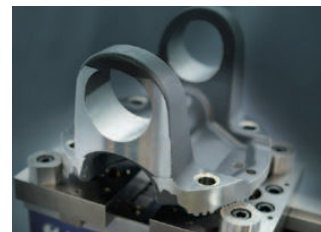
Size b	Order no.	max. clamping force kN	max. torque Nm	Weight kg
125	04.25.150.002 without jaws	40	105	18



Through flexible positioning of the grip clamping elements, it is possible to securely clamp uneven, non-parallel workpieces such as saw cuts, cast materials or forged parts.



Through the use of the pendulum jaw, it is possible to adjust to many workpiece contours.



Auxiliary jaws screwed on for optimum machining accessibility and wide clamping ranges.

Accessories for BULL / BULL 5-S



Smooth clamping jaw hardened, ground, standard equipment
Smooth clamping jaw soft (1.2842), milled, for the fabrication of moulding jaws

Clamping jaw with linear grooves for firmly gripping the workpieces

Size	Order no. Smooth clamping jaw hardened	Height	Thick- ness
125	01.25.152.014.4	39,2	12
Smooth clamping jaw soft			
125	01.11.105.002.5	39,2	12
Clamping jaw with linear grooves			
125	01.11.105.001.5	39,2	12



Smooth clamping jaw with step, hardened and ground, for saving clamping supports

Size	Order no.	Step	Thick- ness	Height
125	01.11.105.003.5	3 x 6	12	39,2



Clamping jaw with corrugation hardened and ground

Size	Order no.	Height	Thick- ness	Gripper Order no.	Thread
125	01.26.160.035.3	40	12	01.26.160.048.4	M10



Pull-down jaws for raw parts with inset spring plate for clamping raw parts. The spring plates establish a secure hold and deep drawing effect

Size	Order no.	Height	Thickness
125	04.13.125.250.9	40	21

Step jaws

Hardened steel, for clamping parallel workpieces



Step jaw	Order no.	Clamping range	
		Bull 5-S	Bull mech.
fixed	04.25.150.008	0-166	3-345
mobile	04.25.150.009		

Step jaws for bolting onto step jaws order no. 01.25.150.008, order no. 01.25.150.009 for expanded clamping range



Step jaw	Order no.	Width	Addition. clamping range
narrow	04.25.150.054	60	- 8
wide	04.25.150.053	125	+ 62

Multi-jaws



Jaw	Order no.	Width	Clamping range	
			Bull 5-S	Bull mech.
fixed	04.25.150.050	160	10 - 200	13 - 365
mobile	04.25.150.051	160	max. Ø 225	

Accessories for BULL / BULL 5-S



Pendulum jaw fits to multi-jaw mobile (order no. 04.25.150.051), for clamping non-parallel workpieces, cast parts and shaped workpieces

Scope of delivery: with 2 x hard metal grip insert

Order no.
04.25.150.052



Torque wrench
20-105 Nm

Order no.
70.28.007.202.9



Grip ledge fits step jaws order no. 01.25.150.008, order no. 01.25.150.009 for improved hold of the workpieces on the step (4,5 mm deep, 2,5 mm wide)

Scope of delivery: 2 pieces

Size	Grip ledge	Order no.	Height	Step w x h
125	High	04.25.150.055	39,5	1,4 x 4,5
125	Step	04.25.150.056	19,5	2 x 4,5

Step ledges



For size	Order no.	Height	Thickness
125	04.25.150.061	15	3
125	03.26.160.022.9	20	3
125	03.25.160.024.9	35	3
125	03.26.160.002.9	39	3

Universal top jaws with angle adjustment possibility hardened and ground



Size	Order no.	Height	Thickness
125	04.13.125.400.9	42	10

Workpiece stop adjustable



For size	Order no.	Thread
125	03.11.008.001.4	M 12

Sub-base increasing the vise height results in improved accessibility for 5-sided machining



Order no.	Width	Height	Length
03.26.150.002	125	100	250