

ARNO

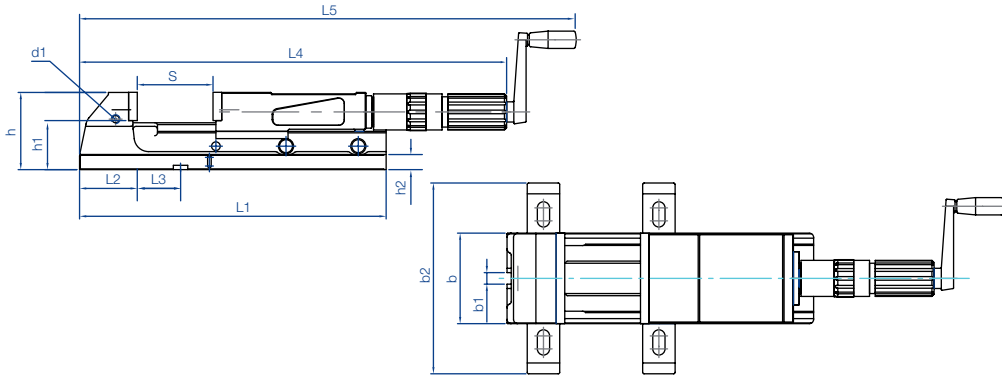
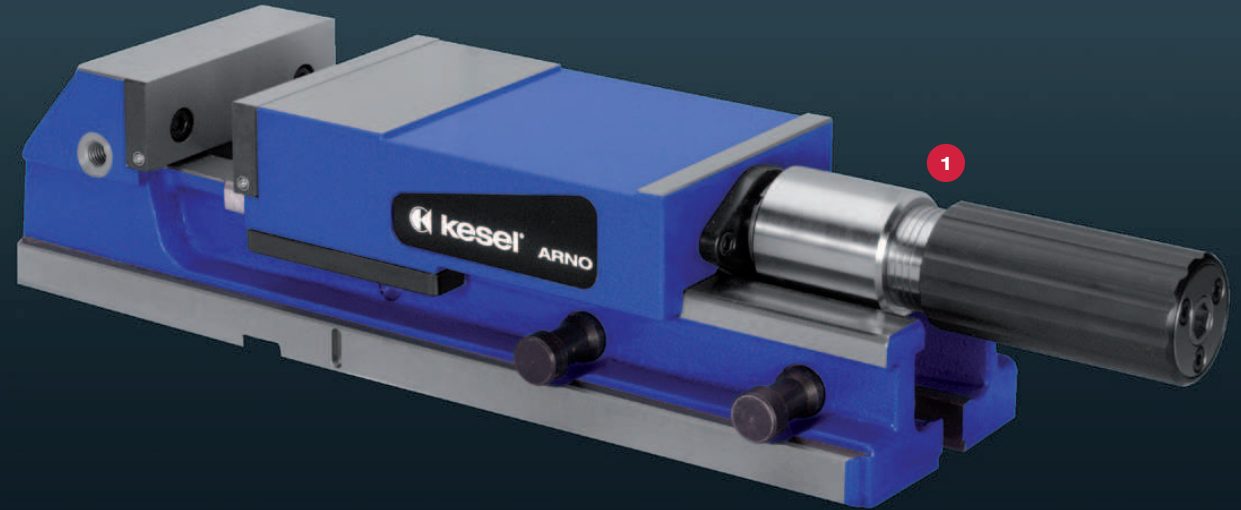
High pressure machine vise

Can be operated with manual crank. Universal high pressure vise with narrow design for conventional machines. A system that has been tried and tested for decades.

- > Strong body of spheroidal graphite iron GJS-600
- > Functional surfaces hardened and ground
- > Optimum accuracy on the workpiece due to ground "camber" on the fixed jaw

Scope of delivery:

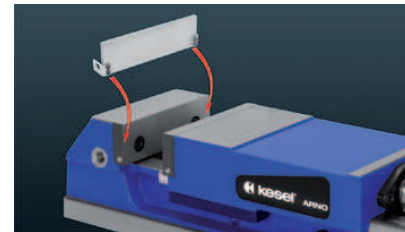
4 clamping claws, 1 manual crank



| Size b | Order number | | Clamping force (kN) | Clamping range „S“ adjustable via locking pins | | | Weight |
|--------|-----------------|-----------------|---------------------|------------------------------------------------|-----------|--------------------------|--------|
| | mechanical | hydraulic | | Step 1 | Step 2 | expanded clamping range* | |
| 125 | 04.10.125.000.9 | 04.11.125.000.9 | 40 | 0 - 105 | 100 - 205 | (255) | 25,0 |
| 160 | 04.10.160.000.9 | 04.11.160.000.9 | 50 | 0 - 155 | 150 - 305 | (365) | 50,0 |

| Size b | L1 | L2 | L3 | L4 | | L5 | | b1 | b2 | h | h1 | h2 | d1 |
|--------|-----|----|----|------|------|------|------|----|-----|-----|----|----|-----|
| | | | | min. | max. | min. | max. | | | | | | |
| 125 | 425 | 80 | 60 | 489 | 694 | 613 | 818 | 16 | 265 | 107 | 65 | 21 | M12 |
| 160 | 570 | 90 | 95 | 575 | 880 | 712 | 1007 | 16 | 300 | 130 | 80 | 25 | M16 |

*Clamping range expansion by fitting a bolt in the transverse groove of the spindle nut.



Step ledge quick release system

- > Step ledges are simply "clicked" in by hand, with no need for tools
- > No penetration of chips beneath the step ledge
- > Secure and stable hold, also with the use of compressed air
- > Available in a range of heights (accessories)



1 ARNO mechanical-hydraulic

- > Hydraulic force intensifier
- > Smooth motion
- > Clamping force indication via optical grooved marking
- > Adjustable slip clutch

2 ARNO mechanical-mechanical

- > Mechanical force intensifier
- > Precise force setting through limit stop
- > Pre-clamping option
- > Adjustable slip clutch

ARNO accessories



Turntable 360° graduation for exact and quick vise alignment. With longitudinal grooves for positioning and screwing on.

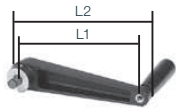
| Size | Order no. | Dimensions | Weight |
|------|-----------------|---------------|--------|
| 125 | 04.13.125.000.9 | 270x264x28 mm | 11 kg |
| 160 | 04.13.160.000.9 | 325x325x32 mm | 19 kg |

High pressure spindle



| mechanical / mechanical | | | | | |
|-------------------------|-----------------|---------------------------|------------------------|--------|--------|
| Size | Order no. | max. clamping force in kN | ø d2 | Length | Weight |
| 125 | 04.15.152.000.2 | 40 | Tr 30x6 ²⁹⁹ | 360 mm | 3,4 kg |
| 160 | 04.15.252.000.2 | 50 | Tr 30x6 ²⁹⁹ | 425 mm | 3,8 kg |
| 200 | 04.15.352.000.2 | 80 | Tr 36x6 ²⁹⁹ | 550 mm | 6,5 kg |

| mechanical / hydraulic | | | | | |
|------------------------|-----------------|---------------------------|------------------------|--------|--------|
| Size | Order no. | max. clamping force in kN | ø d2 | Length | Weight |
| 125 | 04.15.102.000.2 | 40 | Tr 30x6 ²⁹⁹ | 360 mm | 3,4 kg |
| 160 | 04.15.202.000.2 | 50 | Tr 30x6 ²⁹⁹ | 425 mm | 3,8 kg |
| 200 | 04.15.302.000.2 | 80 | Tr 36x6 ²⁹⁹ | 550 mm | 6,5 kg |



Manual crank standard version with snap ring to prevent it falling out due to machine vibrations

| Size | Order no. | Length 1 | Length 2 | Width |
|---------|-----------------|----------|----------|-------|
| 125 | 03.15.103.000.4 | 125 | 155 | 120 |
| 160-200 | 03.15.203.002.4 | 160 | 190 | 127 |

Manual crank in shortened design for use in place of the standard manual crank, if the throughput height to the machine table is too small



| Size | Order no. | Length | Width |
|---------|-----------------|--------|-------|
| 125-160 | 03.15.103.001.4 | 110 | 90 |

ARNO accessories



Smooth clamping jaw hardened, ground, standard equipment

Smooth clamping jaw soft (1.2842), milled, for the fabrication of moulding jaws

Clamping jaw with linear grooves for firmly gripping the workpieces

| Size | Order no. Smooth clamping jaw hardened | Height | Thickness |
|------|----------------------------------------|--------|-----------|
| 125 | 01.10.101.005.5 | 39,2 | 12 |
| 160 | 01.10.201.004.4 | 49,2 | 16 |
| 200 | 01.10.301.005.4 | 62,2 | 20 |

| Smooth clamping jaw soft | | | |
|--------------------------|-----------------|--------|-----------|
| Size | Order no. | Height | Thickness |
| 125 | 01.11.105.002.5 | 39,2 | 12 |
| 160 | 01.11.205.002.4 | 49,2 | 16 |
| 200 | 01.11.305.002.4 | 62,2 | 20 |

| Clamping jaw with linear grooves | | | |
|----------------------------------|-----------------|--------|-----------|
| Size | Order no. | Height | Thickness |
| 125 | 01.11.105.001.5 | 39,2 | 12 |
| 160 | 01.11.205.001.5 | 49,2 | 16 |

Smooth clamping jaw with step, hardened and ground, for saving clamping supports

| Size | Order no. | Step | Thickness | Height |
|------|-----------------|--------|-----------|--------|
| 125 | 01.11.105.003.5 | 3 x 6 | 12 | 39,2 |
| 125 | 01.11.105.008.5 | 5 x 10 | 12 | 39,2 |
| 160 | 01.11.205.003.4 | 5 x 8 | 16 | 49,2 |
| 200 | 01.11.305.003.4 | 6 x 12 | 20 | 62,2 |

Clamping jaw with corrugation hardened and ground

| Size | Order no. | Height | Thickness | Gripper Order no. | Thread |
|------|-----------------|--------|-----------|-------------------|--------|
| 125 | 01.26.160.035.3 | 40 | 12 | 01.26.160.048.4 | M10 |
| 160 | 01.26.260.030.3 | 50 | 16 | 01.26.260.080 | M12 |

Grip clamping jaw, hardened, with step

| Size | Order no. | Height | Thickness | Step |
|------|----------------|--------|-----------|------|
| 125 | 01.25.150.0002 | 40 | 12 | 3x3 |
| 160 | 01.25.260.0004 | 50 | 16 | 3x5 |

Prism jaws with horizontal prism 120° hardened and ground

| Size l | Order no. | Height | Thickness | Clamping diameter | |
|--------|-----------------|--------|-----------|-------------------|------------|
| | | | | with 1 jaw | with 2 jaw |
| 125 | 01.11.105.005.4 | 39,2 | 20 | ø 9-50 | ø 14-50 |



ARNO accessories



Prism jaws with horizontal and vertical prism 90° hardened and ground

| Size I | Order no. | Height | Thick-ness | Clamping diameter | |
|--------|-----------------|--------|------------|-------------------|---------|
| | | | | 1 jaw | 2 jaw |
| 125 | 01.11.105.004.4 | 39,2 | 28 | ø 15-42 | ø 24-42 |
| 160 | 01.11.205.004.3 | 49,2 | 32 | ø 18-50 | ø 28-50 |



Pendulum jaws with smooth slide, hardened and ground, for clamping conical workpieces

| Size | Order no. | Height | Thickness |
|------|-----------------|--------|-----------|
| 125 | 04.13.125.150.9 | 39,2 | 43 |
| 160 | 04.13.160.150.9 | 49,2 | 52 |



Pull-down jaws smooth, the workpiece is hold securely, with a deep drawing effect

| Size | Order no. | Height | Thickness |
|------|-----------------|--------|-----------|
| 125 | 04.13.125.200.9 | 39,2 | 25 |
| 160 | 04.13.160.200.9 | 49,2 | 28 |



Pull-down jaws for raw parts with inset spring plate for clamping raw parts. The spring plate establish a secure hold and deep drawing effect

| Size | Order no. | Height | Thickness |
|------|-----------------|--------|-----------|
| 125 | 04.13.125.250.9 | 40 | 21 |
| 160 | 04.13.160.250.9 | 50 | 24 |

ARNO accessories



Smooth clamping jaws raised, hardened and ground, for clamping tall workpieces

| Size | Order no. | Height | Thickness |
|------|-----------------|--------|-----------|
| 125 | 04.13.125.300.9 | 76 | 22 |



Universal top jaws with angle adjustment possibility hardened and ground

| Size | Order no. | Height | Thickness |
|------|-----------------|--------|-----------|
| 125 | 04.13.125.400.9 | 42 | 10 |
| 160 | 04.13.160.400.9 | 52 | 10 |



Workpiece stop adjustable

| For size | Order no. | Thread |
|----------|-----------------|--------|
| 125 | 03.11.008.001.4 | M 12 |
| 160/200 | 03.11.208.001.4 | M 16 |



Step ledges

| Size | Order no. | Height | Thickness |
|------|-----------------|--------|-----------|
| 125 | 03.25.160.022.9 | 13 | 3 |
| 125 | 03.25.160.023.9 | 22 | 3 |
| 125 | 03.25.160.024.9 | 35 | 3 |
| 125 | 03.26.160.002.9 | 39 | 3 |
| 125 | 04.25.150.060 | 35 | 3 |
| 125 | 04.25.150.061 | 15 | 3 |
| 160 | 03.25.260.022.9 | 14 | 3 |
| 160 | 03.25.260.023.9 | 30 | 3 |
| 160 | 03.25.260.024.9 | 44 | 3 |
| 160 | 03.26.260.0001 | 49 | 3 |